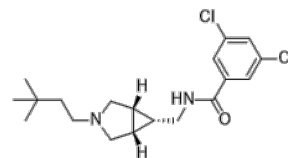


Product Name : ML218
Cat. No. : PC-23650
CAS No. : 1346233-68-8
Molecular Formula : C₁₉H₂₆Cl₂N₂O
Molecular Weight : 369.33
Target : Calcium Channel
Solubility : 10 mM in DMSO



Biological Activity

ML218 (CID 45115620) is a selective, centrally active T-type Ca(2+) channel inhibitor with IC₅₀ of 310 nM and 270 nM for Cav3.2 and Cav3.3 respectively in patch clamp electrophysiology.

ML218 demonstrates robust effects of ML218 on the inhibition of T-type calcium current, inhibition of low threshold spike, and rebound burst activity.

ML218 is orally efficacious in haloperidol-induced catalepsy, a preclinical PD model.

References

Xiang Z, et al. ACS Chem Neurosci. 2011 Dec 21;2(12):730-742.

Caution: Product has not been fully validated for medical applications. Lab Use Only!

E-mail: tech@probechem.com